

April 30, 2018

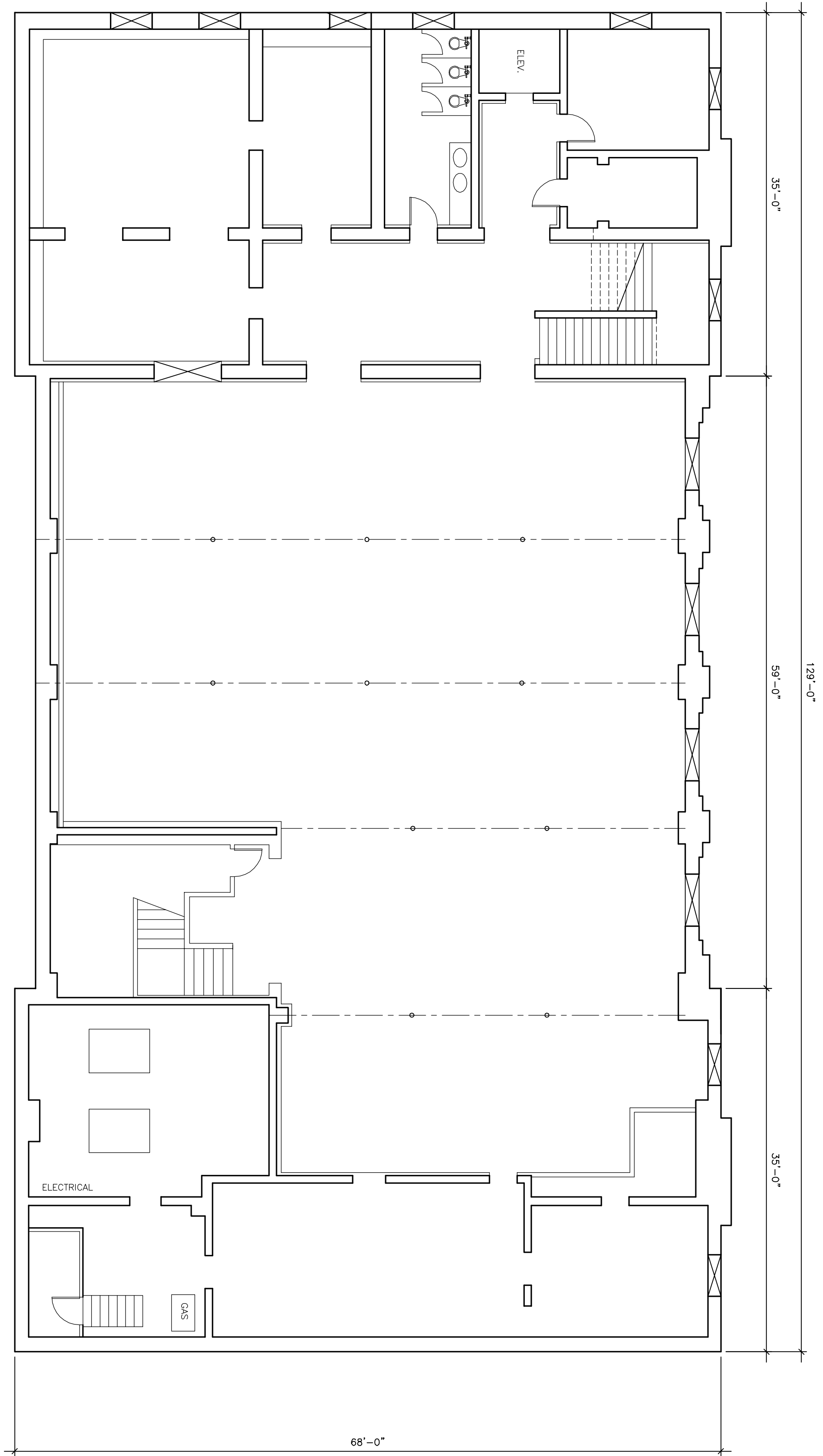
**ADDENDUM NO. 1**

**Window Replacement at the former Masonic Temple located at 145 W. Cortland and the former Vermeulen's building located at 135 W. Cortland**

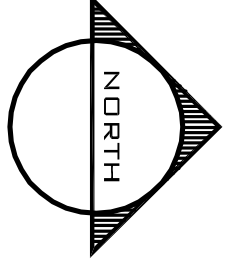
Notice is hereby given that the following additional information and changes shall become part of the specifications of the above referenced contract. You are to acknowledge the addenda on the Proposal Sheet.

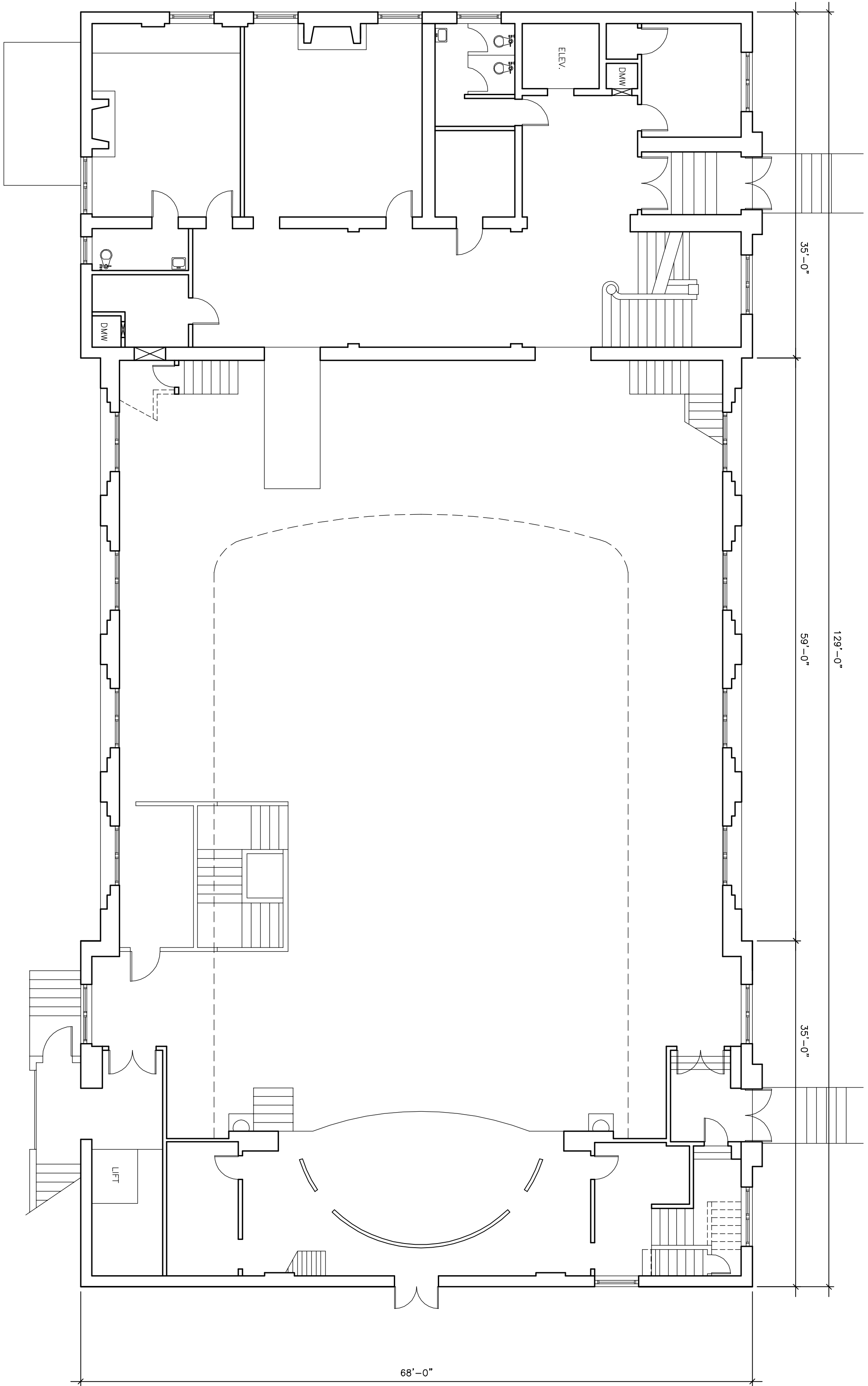
1. Circular openings located in the top of the N. wall of 135 W. Cortland St. (Vermeulens) do NOT need to have windows installed. Eliminate from work scope
2. Third floor window units with ½ circles located at top of the former Masonic Temple located at 145 W. Cortland St. should be designed as casement style windows vs. current hook window style
3. Window to 135 W. Cortland St. were listed on spec as equal split sash. Comment listed in error. Windows are NOT equal sash. All designs are to be 1 for 1 replacement of existing window sash style and dimension
4. Two grade level windows located in S. wall of 135 W. Cortland St. are to be replaced with storefront window systems to match 2 adjacent windows directly to the W.
5. Clarification. Several windows on former Masonic building located at 145 W. Cortland St. currently do not contain window mullions in lower sashes due to damage and temporary replacement glazing. All windows are to contain external window mullions to match remainder of building.
6. Jason Covalle to provide PDF drawings on the building to forward for contractors to review. (ATTACHMENT)

END OF ADDENDUM

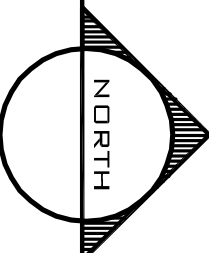


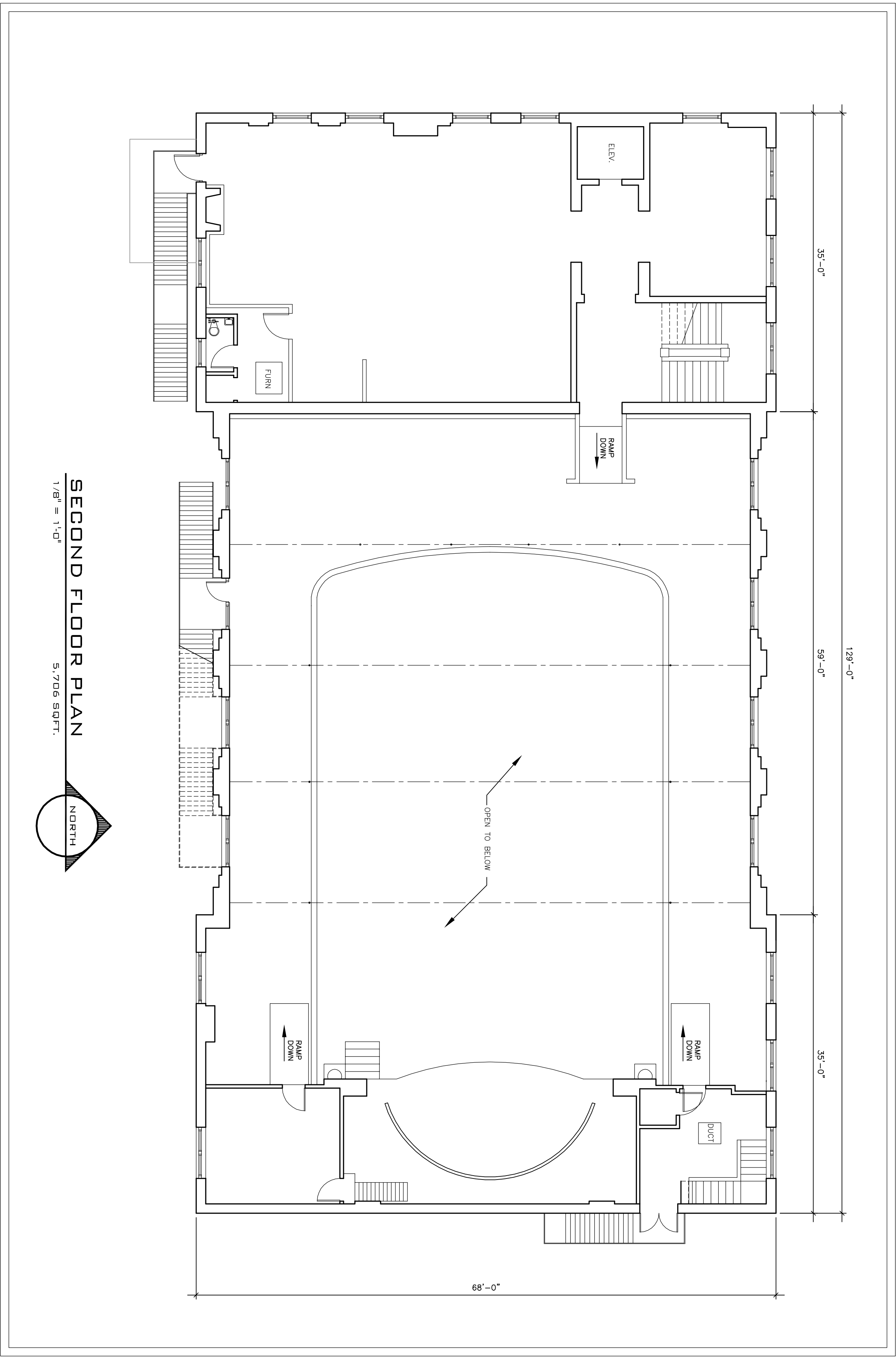
**BASEMENT FLOOR PLAN**  
 1/8" = 1'-0"  
 8,590 SQ.FT.



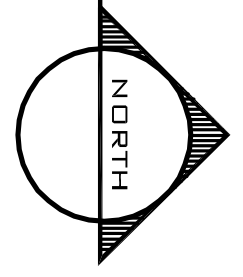


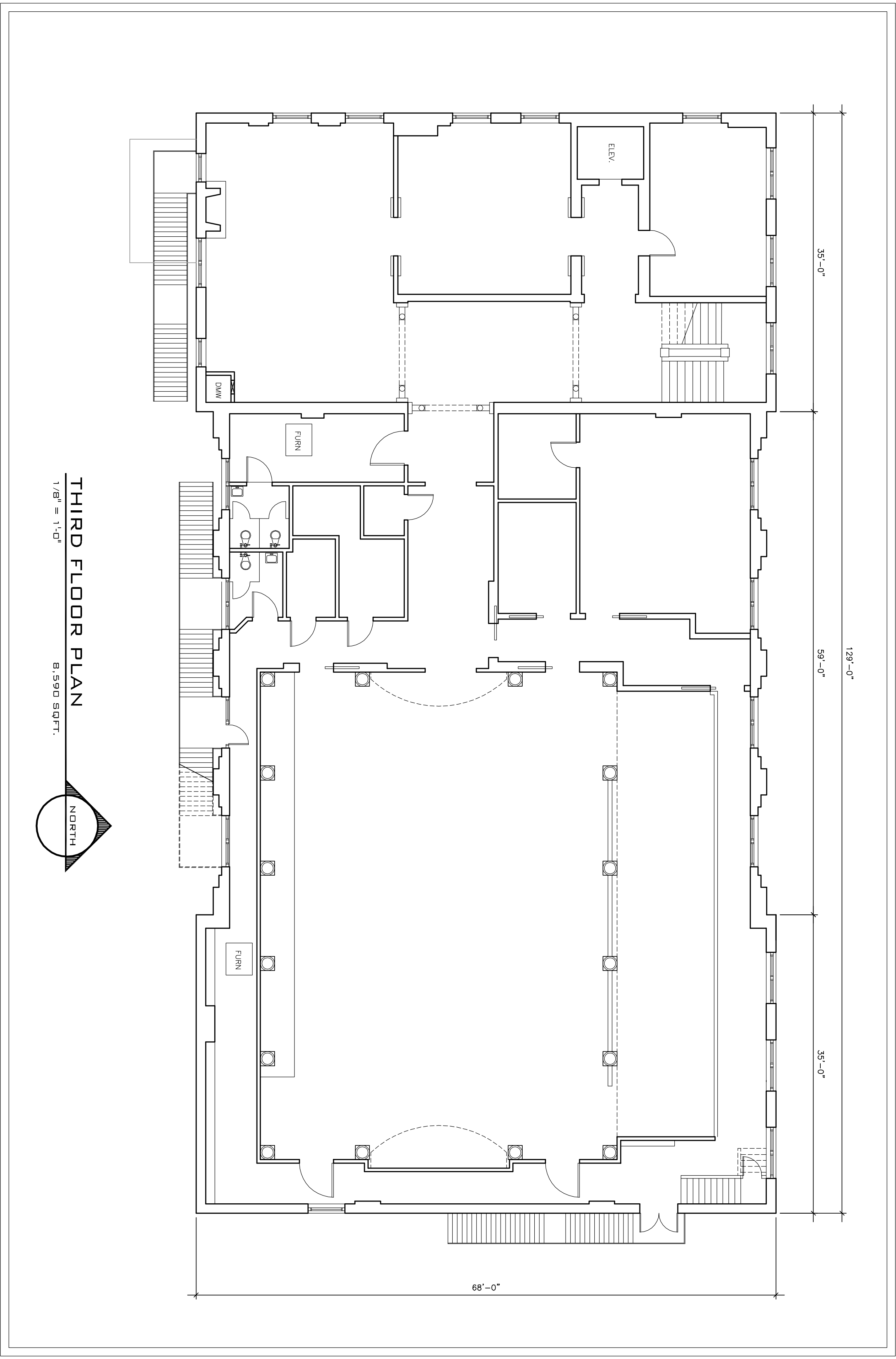
**FIRST FLOOR PLAN**  
1/8" = 1'-0"  
8,590 SQ.FT.



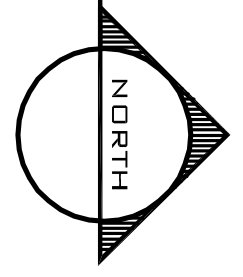


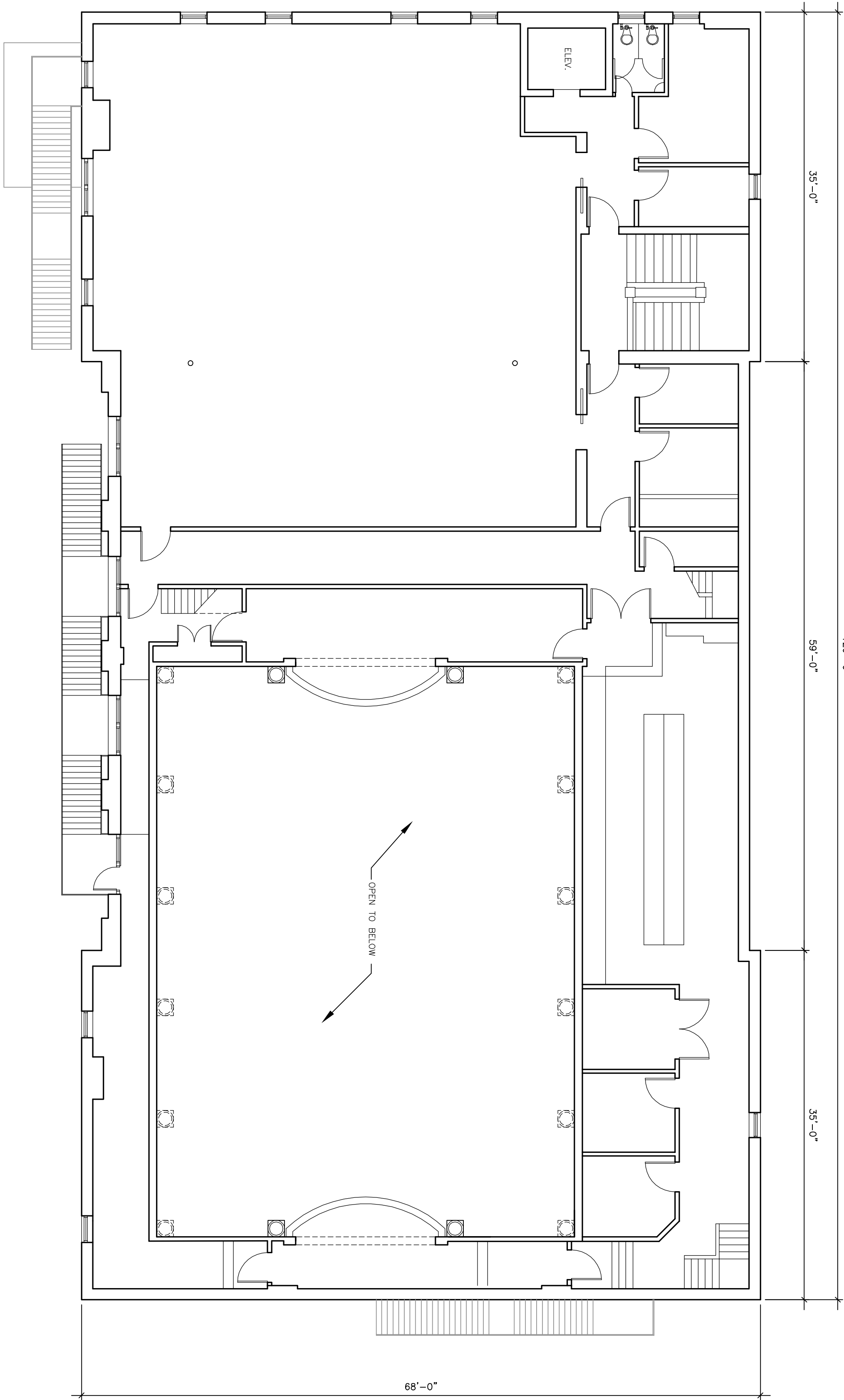
**SECOND FLOOR PLAN**  
1/8" = 1'-0"  
5,706 SQFT.





THIRD FLOOR PLAN  
1/8" = 1'-0"  
8,590 SQFT.

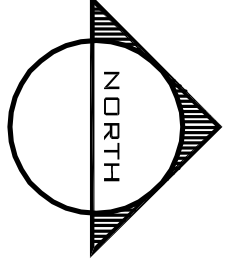


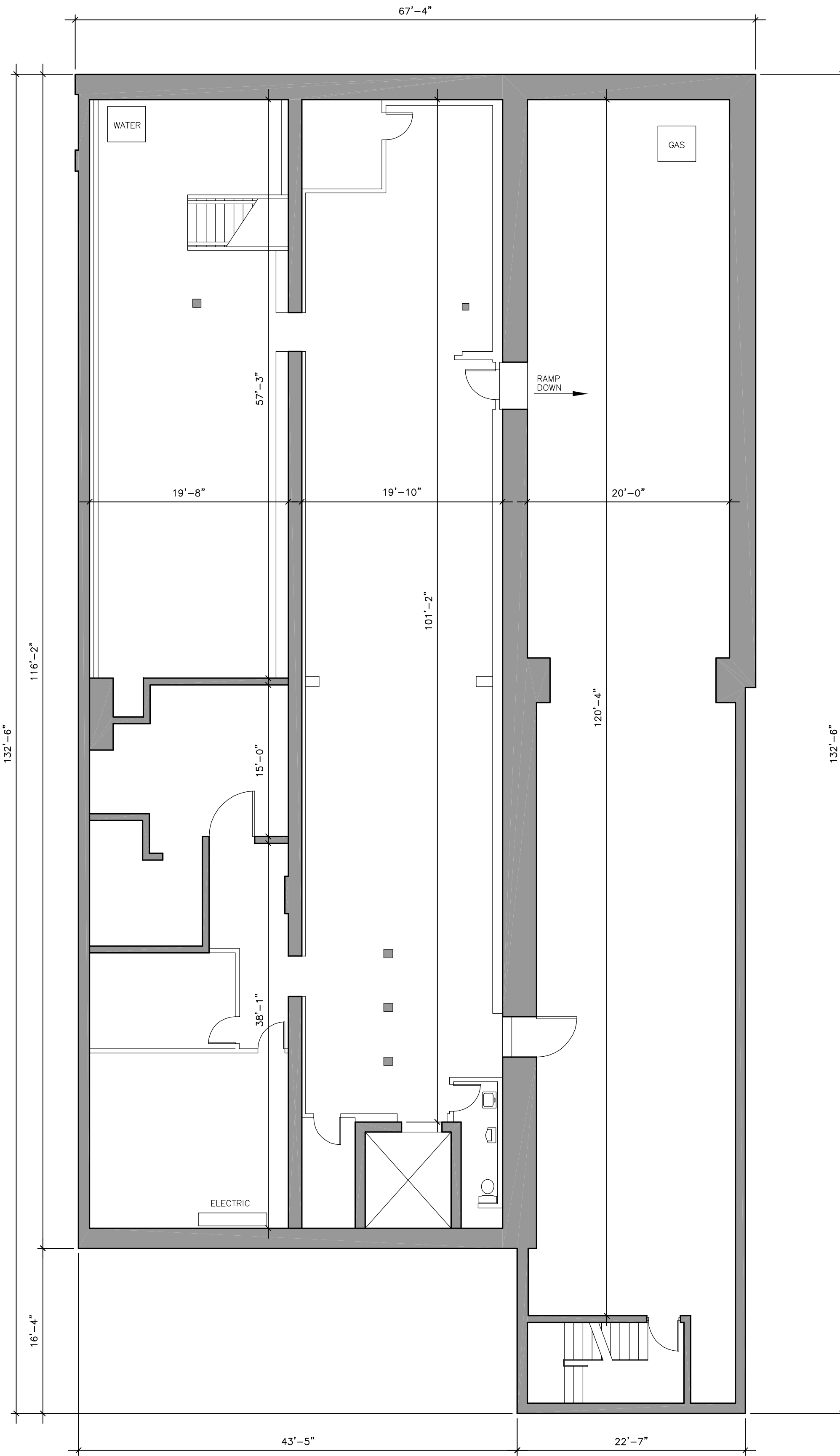


**FOURTH FLOOR PLAN**

1/8" = 1'-0"

6,254 SQFT.

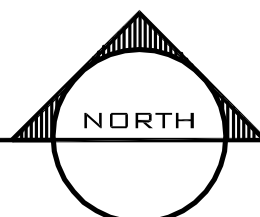




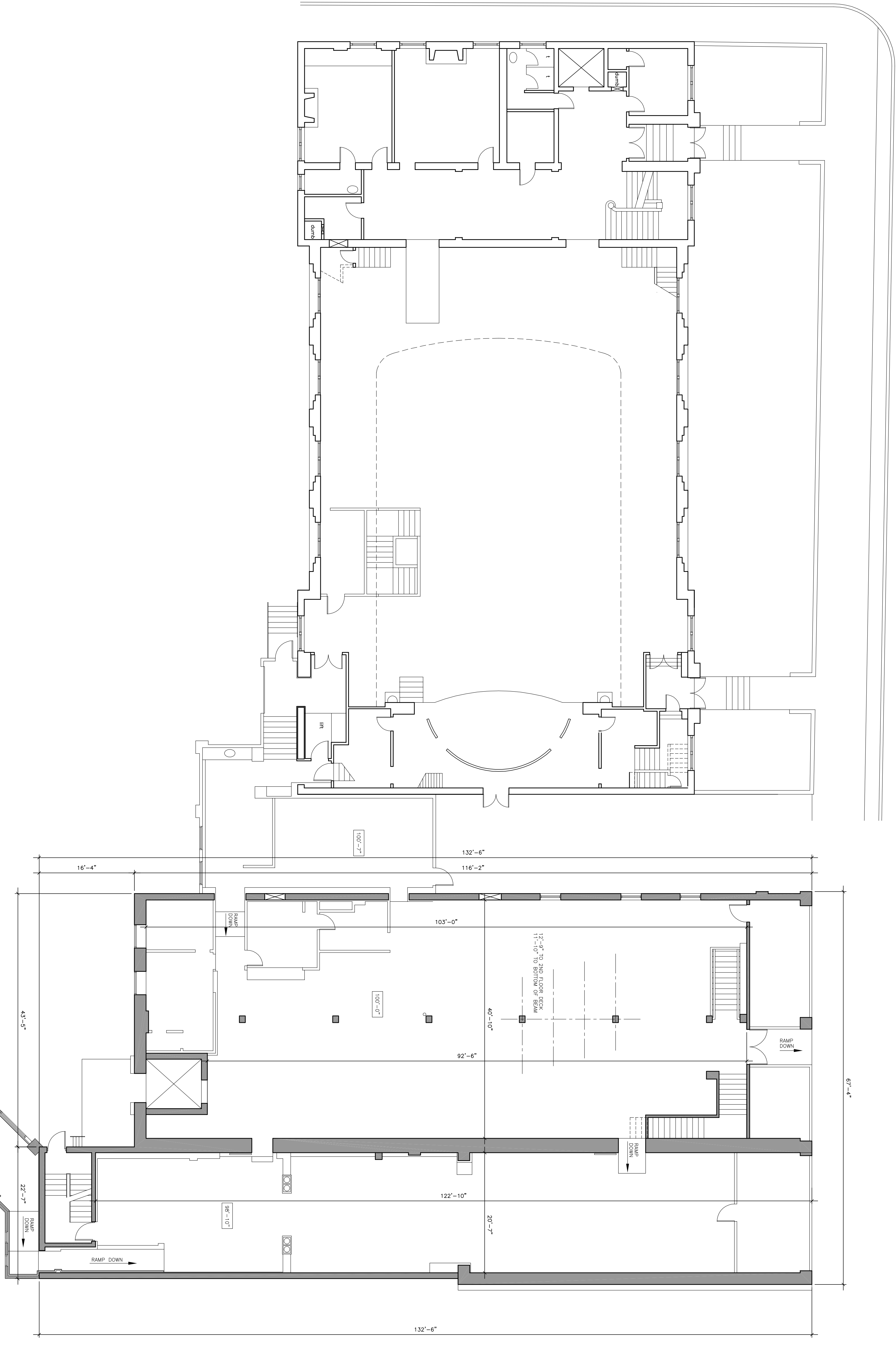
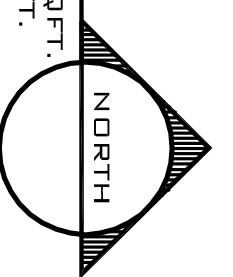
**BASEMENT FLOOR PLAN**

1/8" = 1'-0"

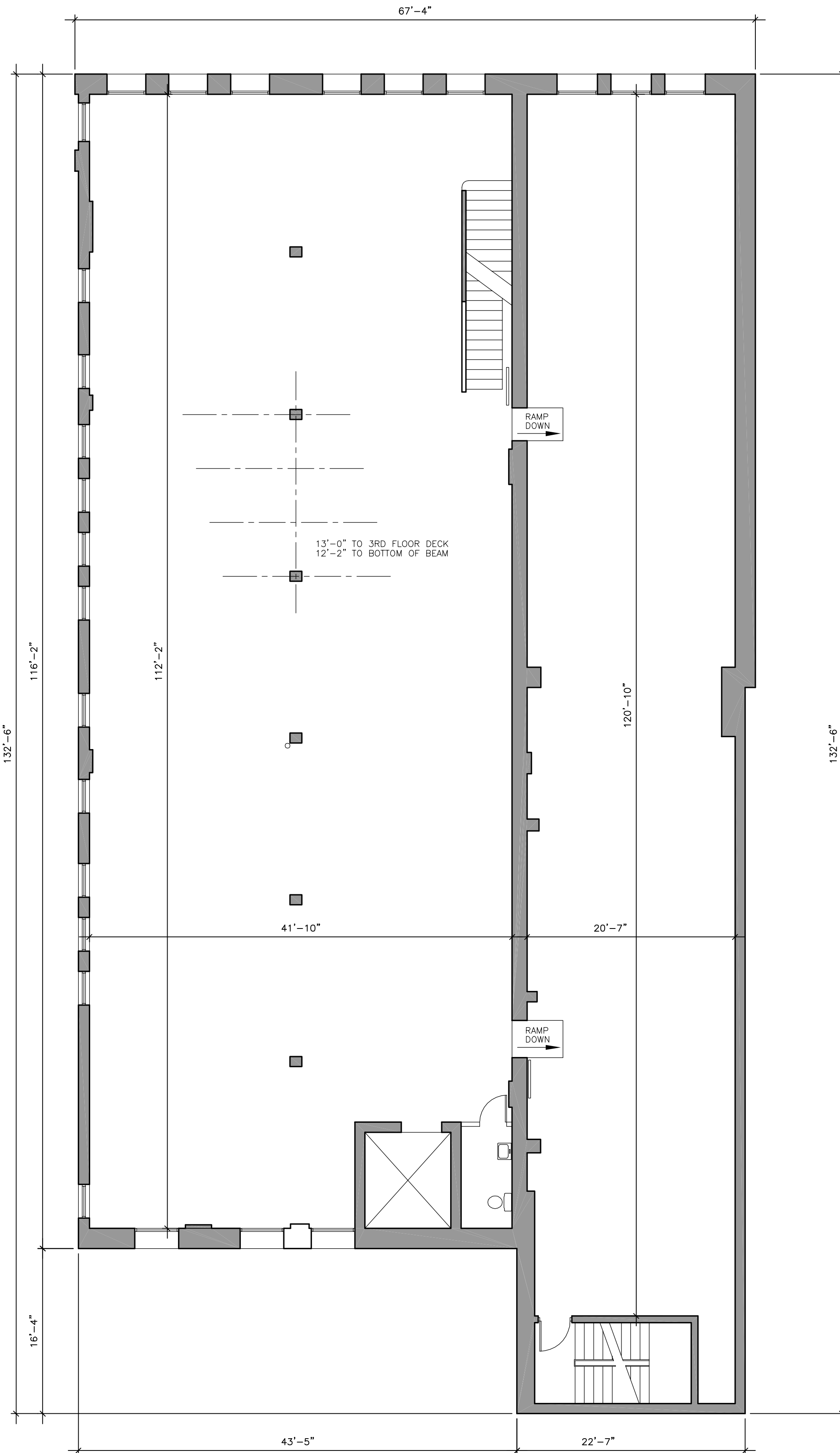
8,098 SQFT.



**FIRST FLOOR PLAN**  
 1/8" = 1'-0" VERMEULEN BUILDING = 8,365 SQFT.  
 CONNECTOR = 930 SQFT.



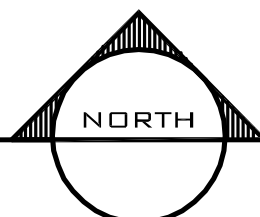


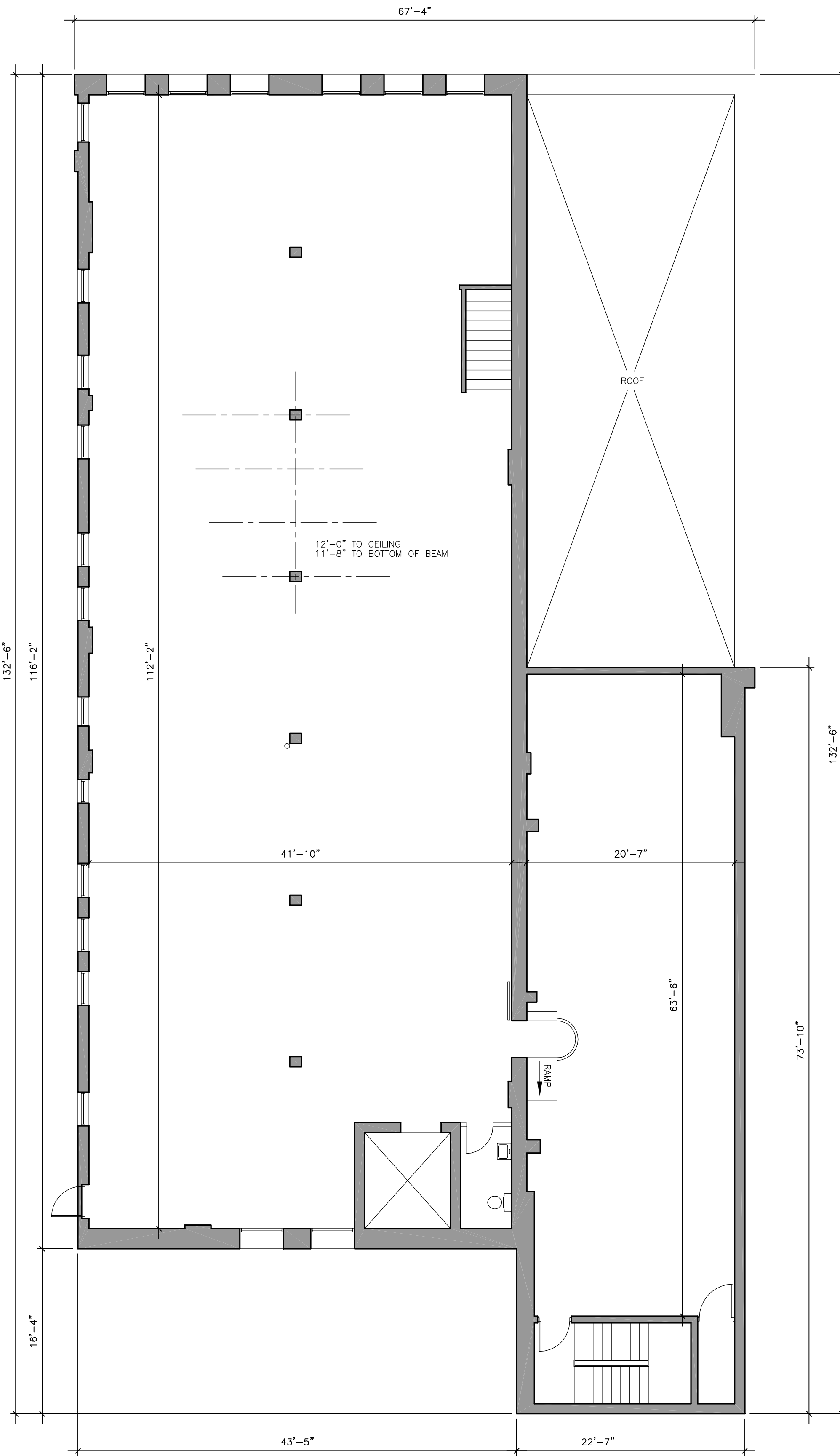


**SECOND FLOOR PLAN**

1/8" = 1'-0"

8,098 SQFT.





**THIRD FLOOR PLAN**

1/8" = 1'-0"

6,773 SQFT.

